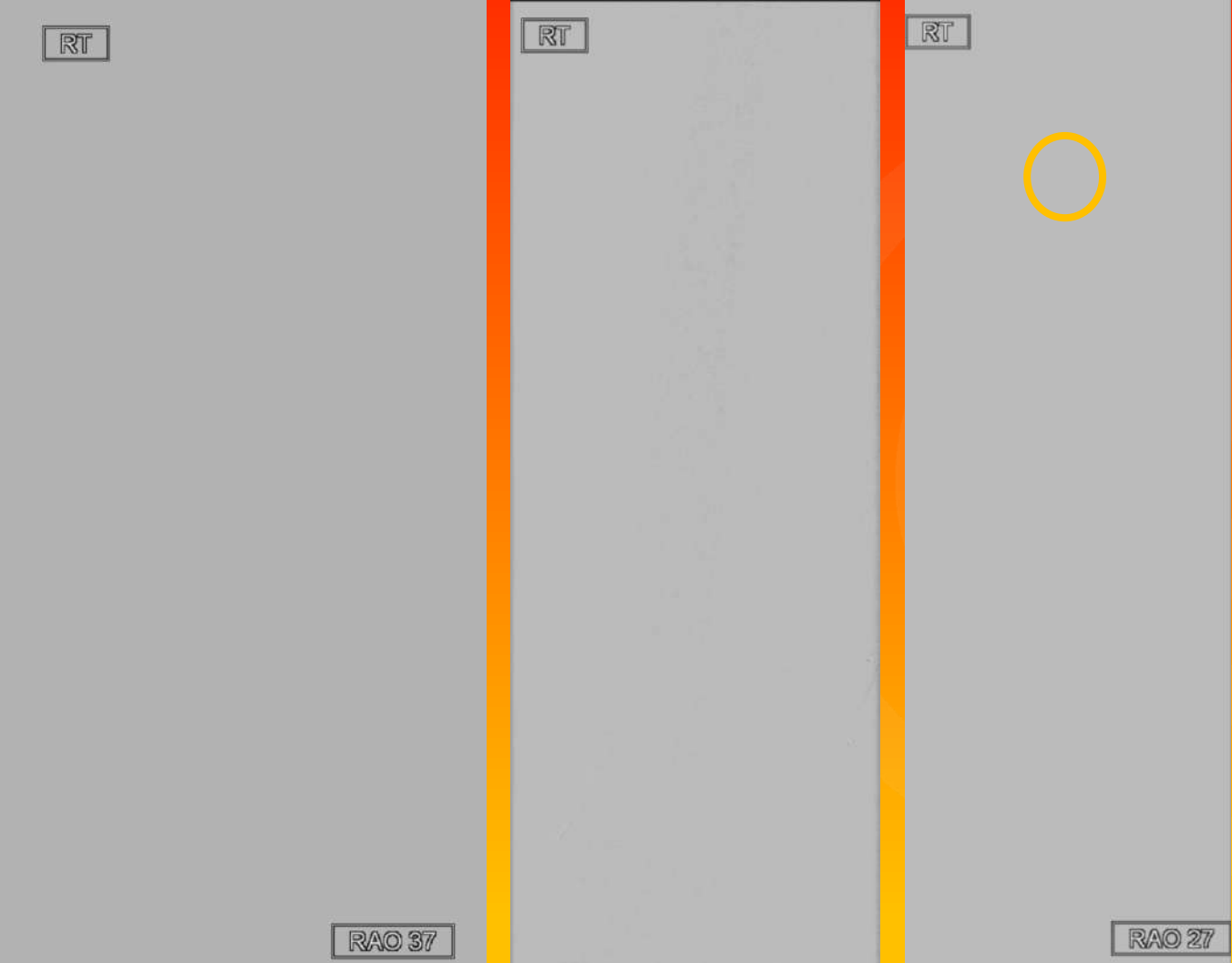




CHALLENGING SFA/POP CASE 1

- 77 Y-OLD
- EX HEAVY SMOKER
- PREVIOUS FEM-POP VEIN BYPASS BECAUSE OF 2nd TOE necrosis (2019)
- TRAUMA 1ST TOE WITH INFECTION AND NECROSIS





APPROACH

- Intraluminal 0.035
- Intraluminal 0.018
- Subintimal 0.035
- Open surgery

Three Radiopaque Markers

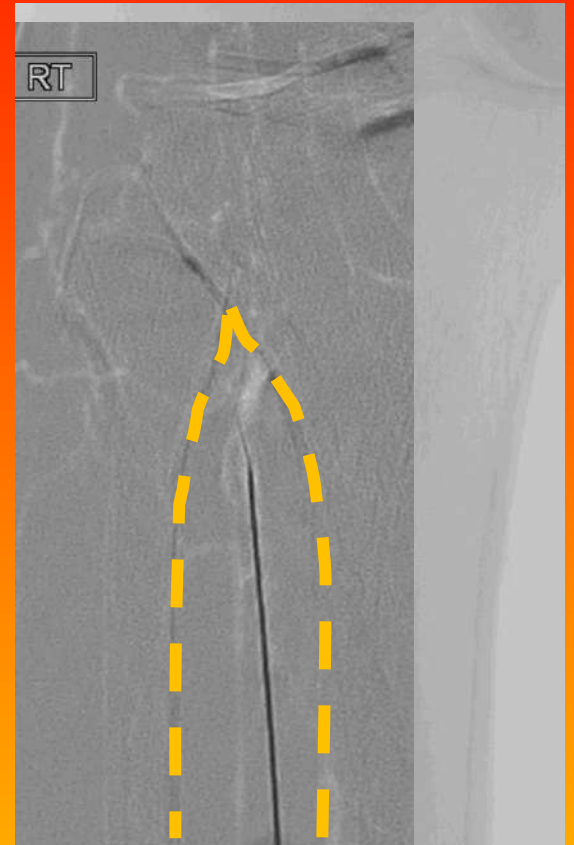
- Markers facilitate accurate assessment of position
- Unique spacing provides easy measurement of common stent and balloon sizes
- Embedded marker is 1 mm from distal tip; 40 mm and 60 mm spacing

Minimum Sheath Compatibility: 4 Fr

RT

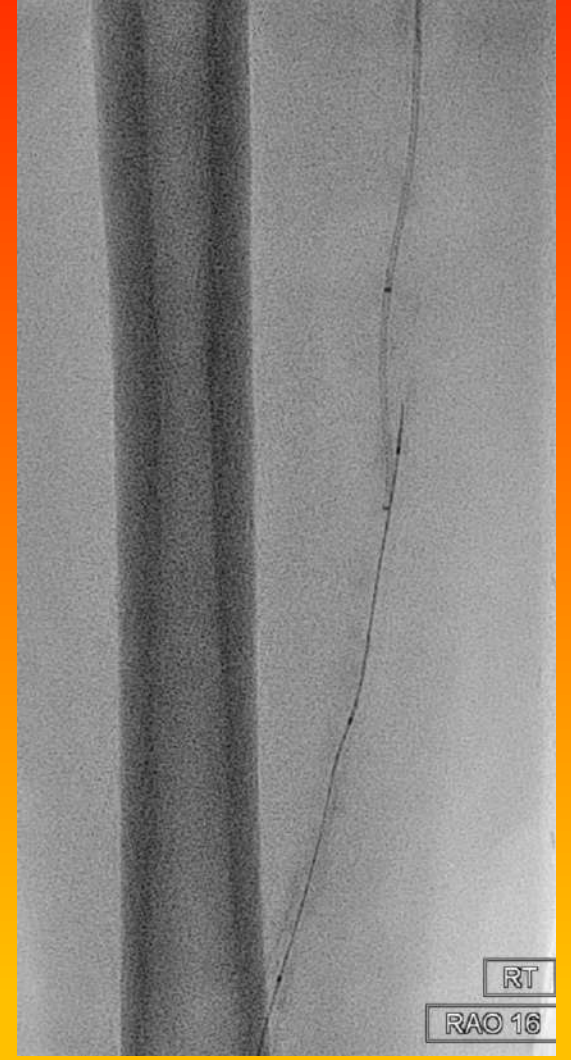


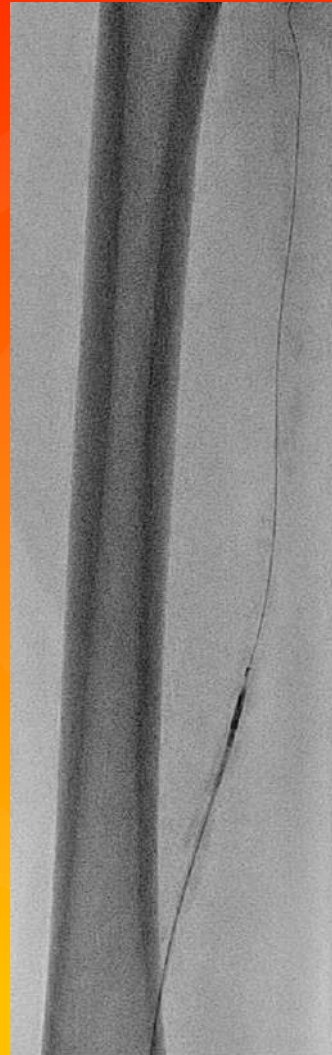
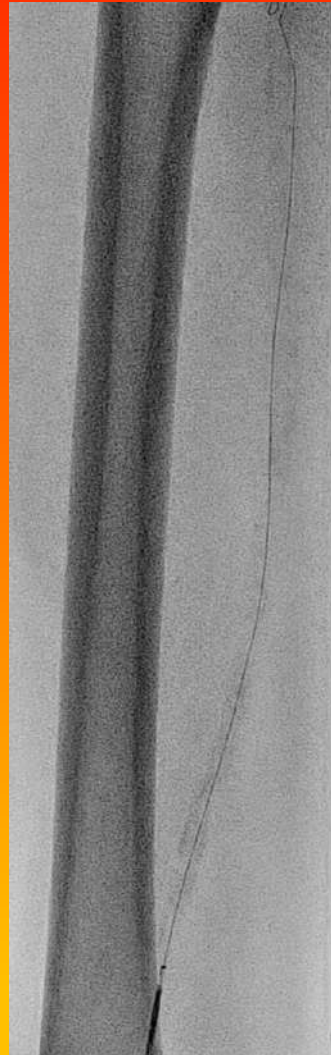
RT

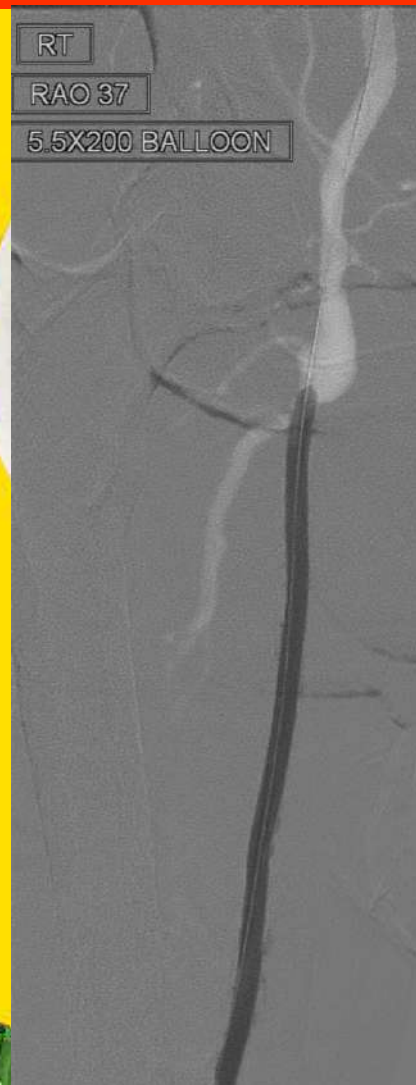


RAO 35 deg

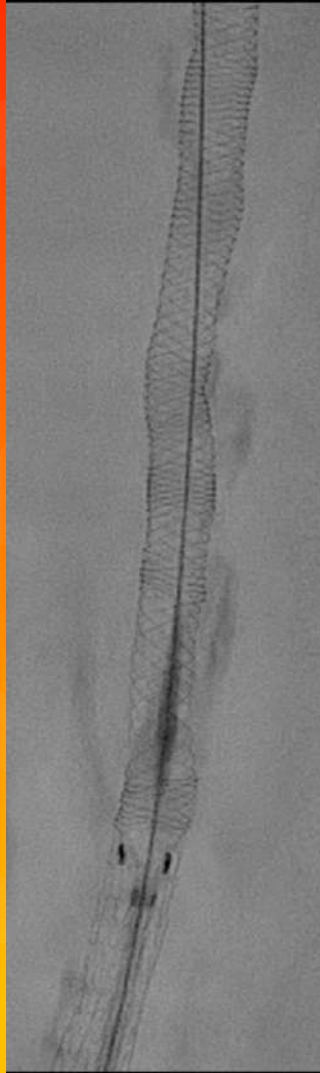
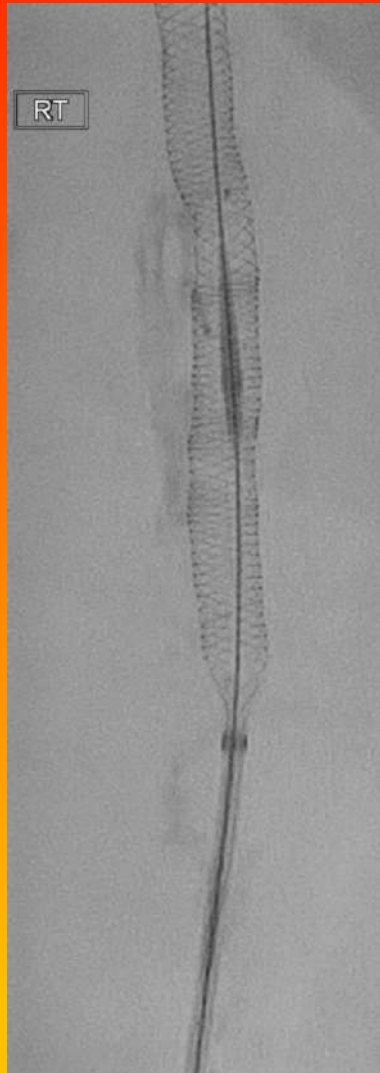
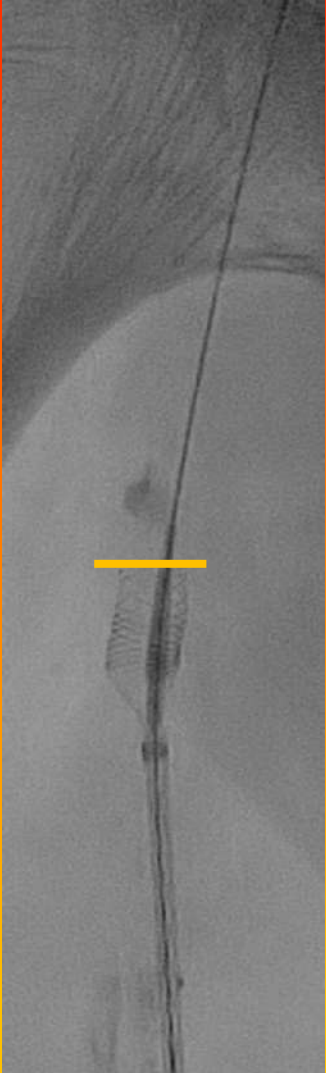
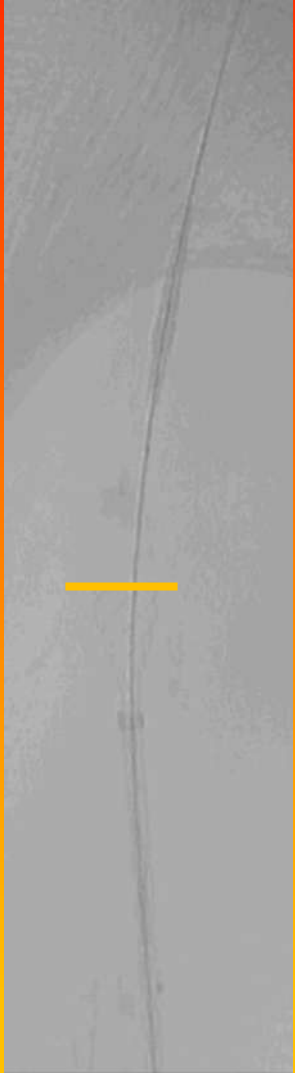
ASAHI GLADIUS MG PV ES



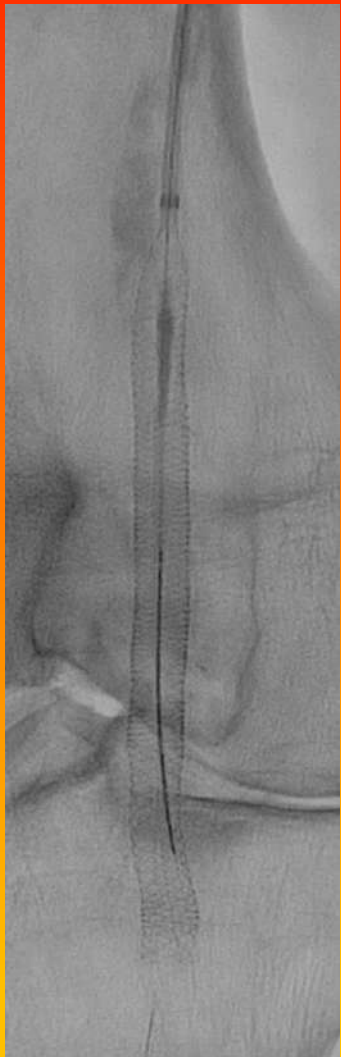












[J Endovasc Ther.](#) 2018 Jun;25(3):334-342. doi: 10.1177/1526602818763352.
 Epub 2018 Mar 20.

Endovascular Treatment of Severely Calcified Femoropopliteal Lesions Using the "Pave-and-Crack" Technique: Technical Description and 12-Month Results

[Marina Dias-Neto](#)^{1 2}, [Manuela Matschuck](#)³, [Yvonne Bausback](#)³,
[Ursula Banning-Eichenseher](#)³, [Sabine Steiner](#)³, [Daniela Branzan](#)⁴, [Holger Staab](#)⁴,
[Ramon L Varcoe](#)^{5 6}, [Dierk Scheinert](#)³, [Andrej Schmidt](#)³

